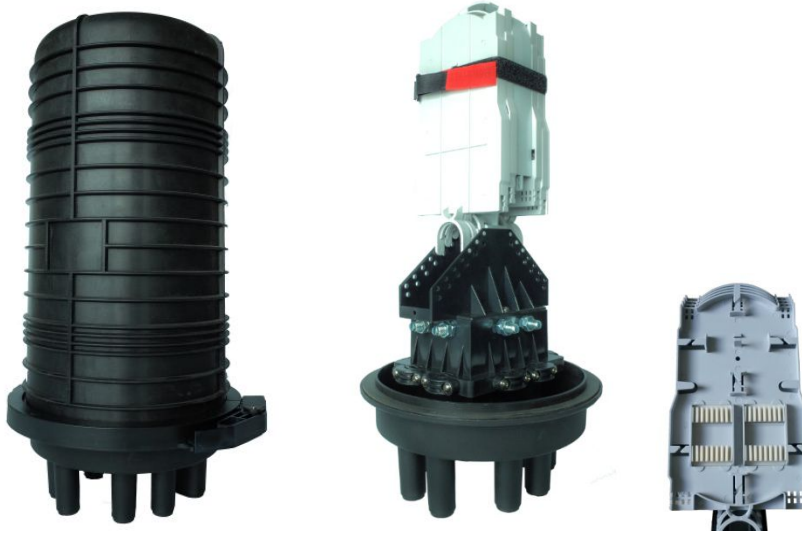


GJS-D2887

—Dome Heat shrinkable seal FOSC



Application

Suitable for aerial, cable duct, direct buried, pedestal and provides the perfect solutions for the protection of fiber splice points from the environment, especially from the permeation of water.

Features & Benefits

- High quality engineering plastic, long service life
- Big splice capacity dome type, heat shrinkable seal ports.
- .Reliable gasket sealing system, rated to IP68

Specifications

Part No.	Dimension (mm)	No. of cable ports	Splice capacity of each tray	Max. number of splice tray	Splice capacity
GJS-D2887	515×Ø310	1 oval port & 6 circular ports	24FO	12	288 FO

Accessories for customer option:

- Grounding device.
- Inflating valve.
- Wall-mounted kit.
- Pole-mounted kit.