

FDB-T227-16

Outdoor FTTx Distribution Box

Applications

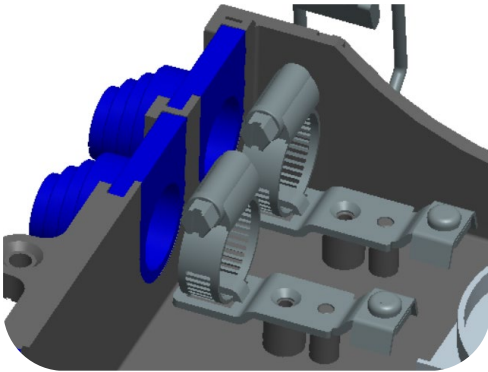
- Applicable for the FTTx project and provide mechanical protection for fiber management system that includes the functions of splicing, patching and passive component integration.
- IP55, suitable for outdoor.



Specifications

Part No.	FDB-T227-16
Dimension	218×293×95 mm
Mid-span ports and main cable diameter	2×φ21mm (max.)
Branch cable port (Optional)	2×φ16mm (max.)
Drop cable ports and cable diameter	16×φ5.5mm (max.)
Number of trays	Max. 7pcs (6 splice trays+1 splitter tray)
Splitter tray support	Micro PLC splitter 1:8, 1:16
Splice capacity of each tray	12/24FO
Adapter support	16 SC
Cover open fixed position	120 degree
Lock type	Screw lock with special head and key
Mounting way support	Wall or Pole

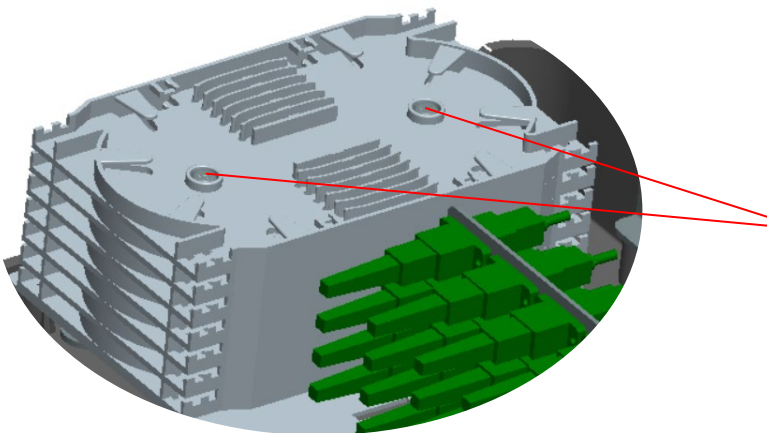
. Cable retention system (tension load)



. loose tube storage and management

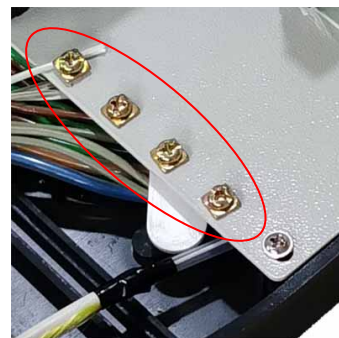
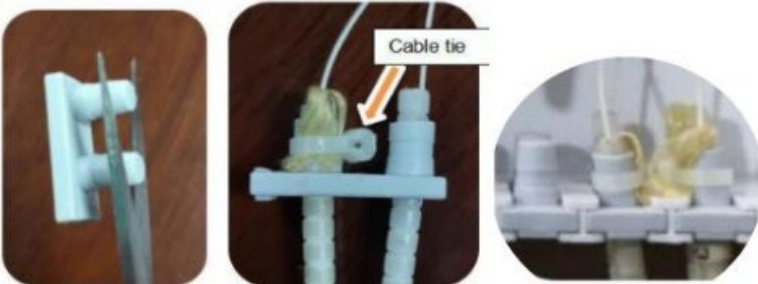


. Security system for the 6 splice trays

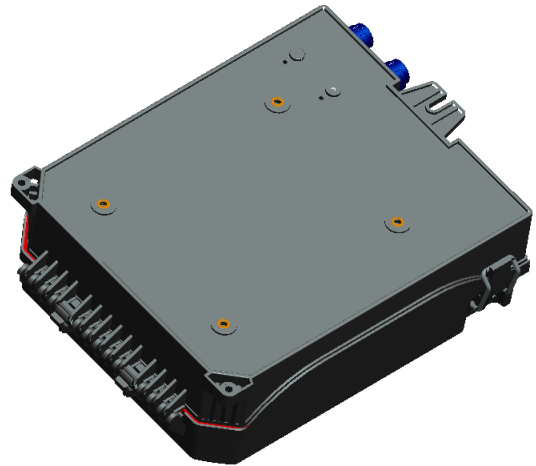


. Drop cable seal and hold

To hold the drop cable strengthen members as an option.



· Wall-mount kits



· Pole-mounting kits (Optional)



Plastic cross arm: 2pcs



Metal clamp: 2pcs



· Accessories

Standard Accessories	Dimensions (mm)	QTY	Remark
Splice protection sleeve	L=45, Dia.=3.0/1.3		As per ordered
Cable ties		24-32	
Buffer tube	L=50cm		
Metal bolts		3	Wall mount kits
Wall plugs		3	
Optional Accessories	Dimensions	QTY	Remark
Plastic cross arms		2	For pole-mounting
Metal clamps		2	